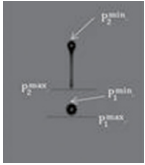
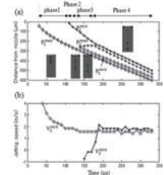


## >> Inkjet measurement and printing solution

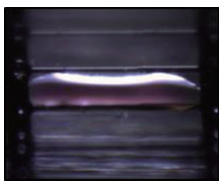
### Drop watcher



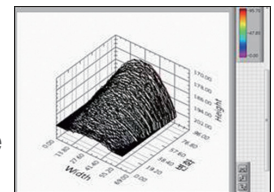
- Jetting performance evaluation (jetting speed, volume, droplet mass)
- Drop formation measurement
- Evaluation of ligament and satellites



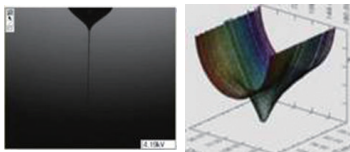
### Contact angle and wetting condition (Micro droplet measurement)



- Pico-liter droplet dispensing
- Real-time measurement of contact angle and volume
- Evaporation rate can be calculated
- Characterization of ink drying and penetration on a substrate
- Wetting condition of ink droplet on display sell



### Electrohydrodynamic (EHD) jet printing



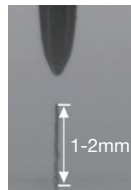
- Patterning size less than 10  $\mu\text{m}$  line width
- Visualization of EHD jet using strobe LED (Using low-cost CCD camera)
- Built in CAD software (Vector to raster print algorithm included)

### Our inkjet printing system

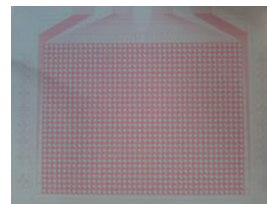


Raster printing results (Dot size : 5-7 $\mu\text{m}$ )

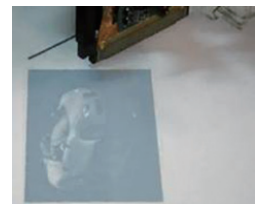
Ultra fine patterning



High aspect ratio  
(3D micro structure print)



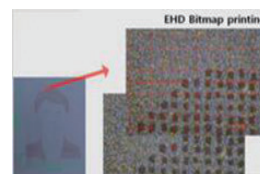
Vector to raster conversion  
(Dxf CAD file to bmp image)



Head tilting  
(User defined print resolution)

### All in one printing system

- Customized software & hardware
- Various printing algorithm
- Inkjet jetting and wetting measurement
- Hybrid printing system (EHD, Inkjet, etc)
- Inkjet health monitoring (jet failure detection system)



## >> PS-jet Model Lineup

All in one printing system

### Model lineup



PSjet-100



PSjet-200



PSjet-300

### Specification

<p><b>PSjet - 100</b> (Low-cost printing system)</p>	<ul style="list-style-type: none"> <li>• Low-cost stepping motor (accuracy : less than 5<math>\mu</math>m)</li> <li>• Printable area : 80 mm X 26 mm</li> <li>• Drop watcher</li> <li>• Contact angle / wetting condition measurement</li> <li>• Hybrid jetting system (Inkjet and EHD)</li> </ul>
<p><b>PSjet - 200</b> (Multi-nozzle printing system)</p>	<ul style="list-style-type: none"> <li>• XY linear motor (accuracy : less than 2<math>\mu</math>m)</li> <li>• Inkjet head (Q-class, S-class, MicroFab, etc)</li> <li>• Printable area : 200 mm X 250 mm</li> <li>• Drop watcher</li> <li>• Head monitoring based on piezo self-sensing</li> <li>• Built in CAD software</li> <li>• Head / Substrate heating</li> </ul>
<p><b>PSjet - 300</b> (Single nozzle printing system)</p>	<ul style="list-style-type: none"> <li>• XYZ linear motor (accuracy : less than 2<math>\mu</math>m)</li> <li>• Printable area : 200 mm X 250 mm</li> <li>• Real-time jetting monitoring (side view camera)</li> <li>• Contact angle / wetting condition measurement</li> <li>• Hybrid jetting system : Inkjet and EHD jet system</li> <li>• Head / Substrate heating</li> <li>• Built in CAD software</li> <li>• Max printing speed : 700 mm/s</li> </ul>

\*We can customize printing systems according to customers' needs and requirement.